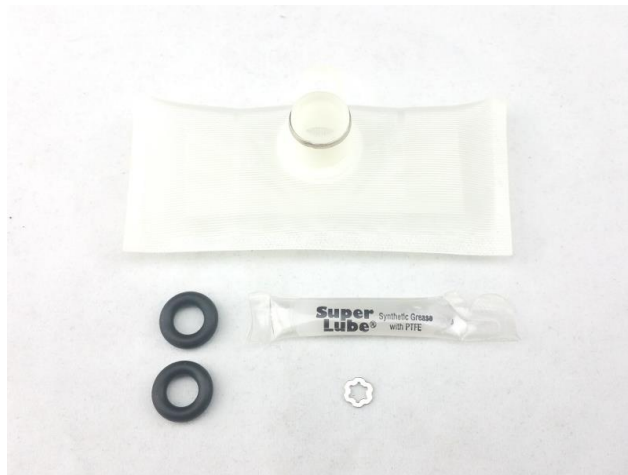


# 9-652/309-1007 07-12 Acura RDX DW65c/300c Fuel Pump Installation Guide



## Parts List:

- DW65c, 9-652 or DW300c, 9-309
- Fuel Sock
- 3-116 O-Rings (x2)
- Fuel Sock Retainer Clip
- Super Lube

**07-12 Acura RDX DW65c/300c Fuel Pump Installation Guide**

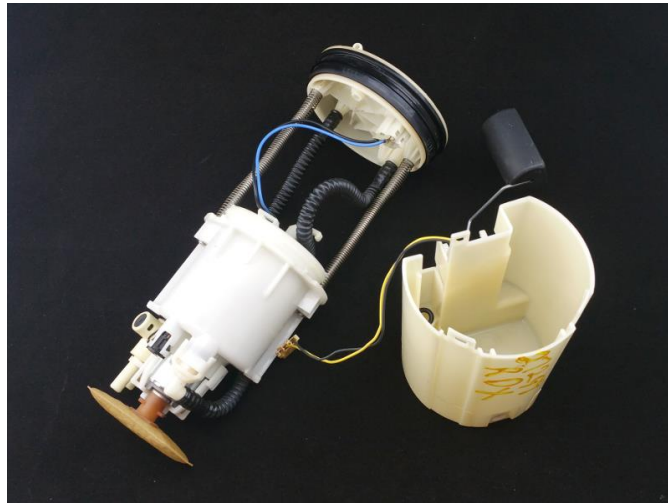
## 07-12 RDX DW65c/300c Fuel Pump Install

PLEASE READ – this guide is intended to aid in the installation of our products. It is recommended that factory manuals or instructions are followed to remove the fuel pump assembly from the vehicle. Some instructions in this guide are generic. The factory manual should supersede any contradiction.

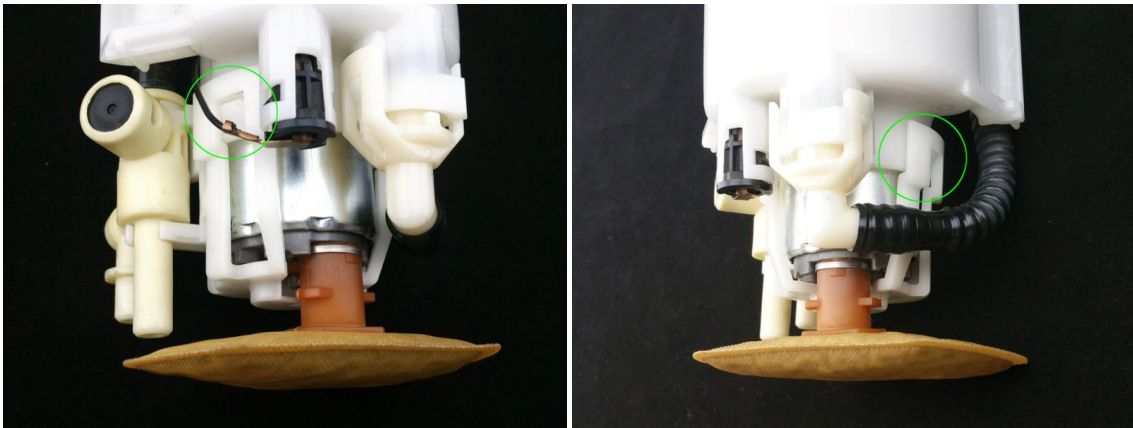
Below is a picture of suggested tools that will make the installation process easier.



1 – disconnect the connector for the fuel level sender and lift the four (x4) tabs to separate the bucket from the assembly



2 – separate the pump cap from the center section of the assembly by lifting the two (x2, green circled) tabs and pulling the cap to the side. Disconnect the electrical connector with a regular screwdriver and then pull the pump out by pulling down



3 – example of the OE pump, fully dressed and the parts that will be removed from the pump and reused on the DW65c/300c

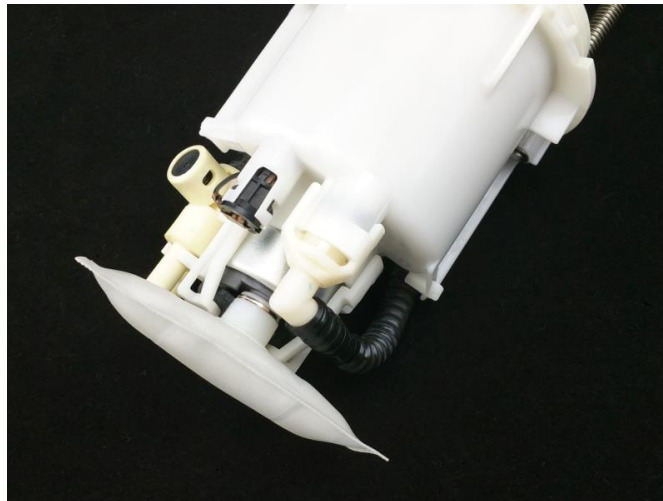


**07-12 Acura RDX DW65c/300c Fuel Pump Installation Guide**

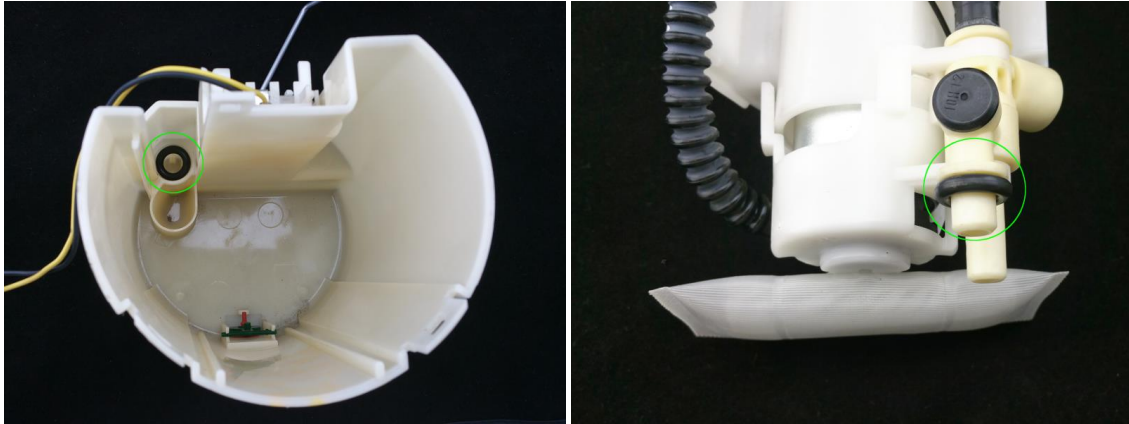
4 – transfer the reused OE parts to the DW65c/300c. The OE pump outlet grommet is the preferred method of installation for the DW pumps, however, if it is not in reusable condition, the supplied orings (x2) should be installed on top of the OE outlet spacer. Be sure to liberally lubricate the grommet/orings with the supplied SuperLube before installation



5 – install the dressed DW65c/300c into the center assembly, then plug in the connector



6 – remove the oring from the bucket assembly, lubricate liberally with supplied SuperLube, and replace it on the center assembly (green circled)



7 – reinstall the center assembly into the bucket assembly and plug in the fuel level sender connector



8 – reinstall the assembly into the fuel tank and attach a length of hose to the outlet of the pump assembly allowing it to drain into a fuel safe container and prime the fuel pump assembly

9 – crank the engine for a period of time long enough to prime the pump assembly and evacuate the air introduced during the pump installation process

10 – attach supply line to the outlet of the pump assembly